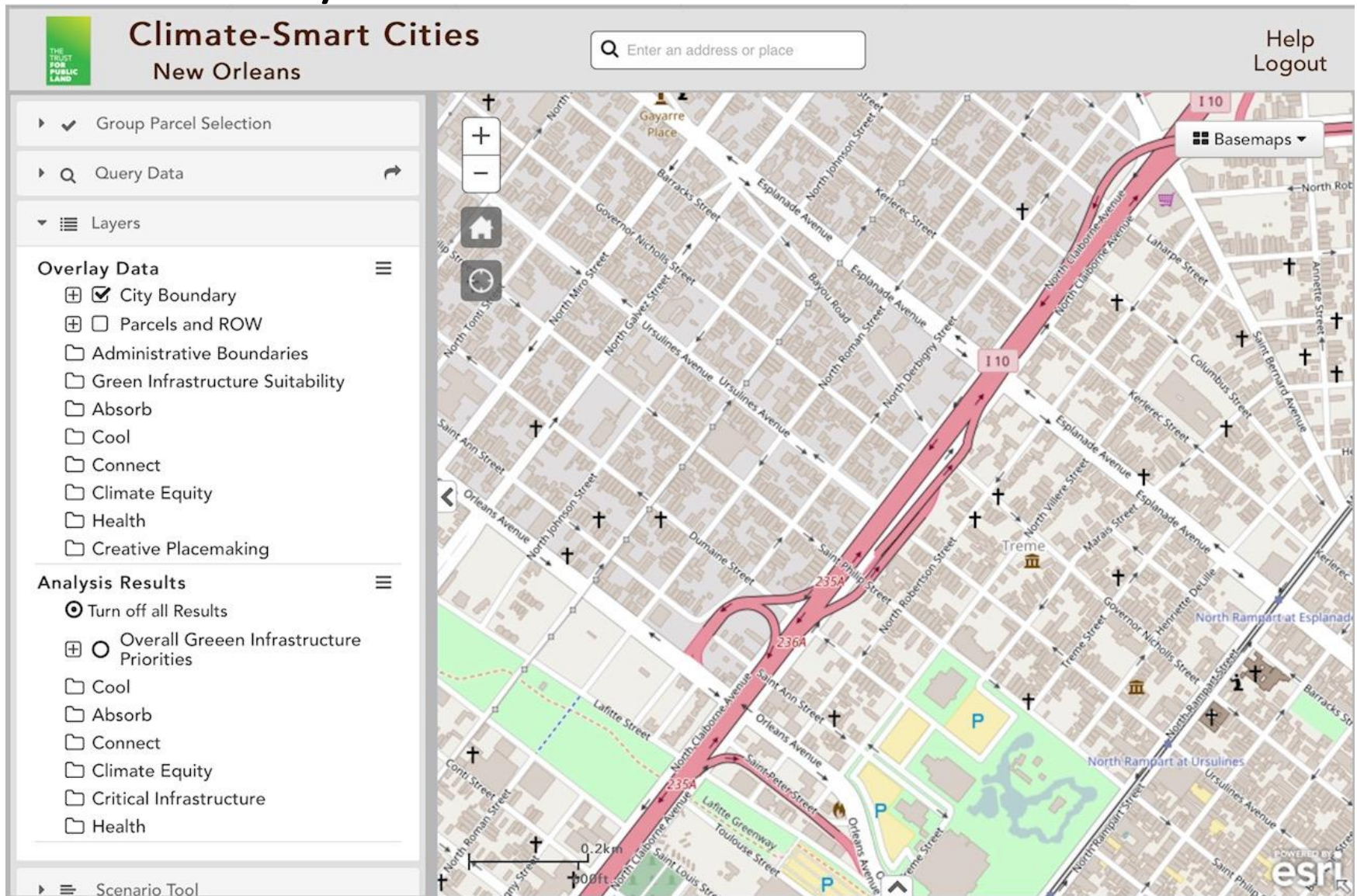


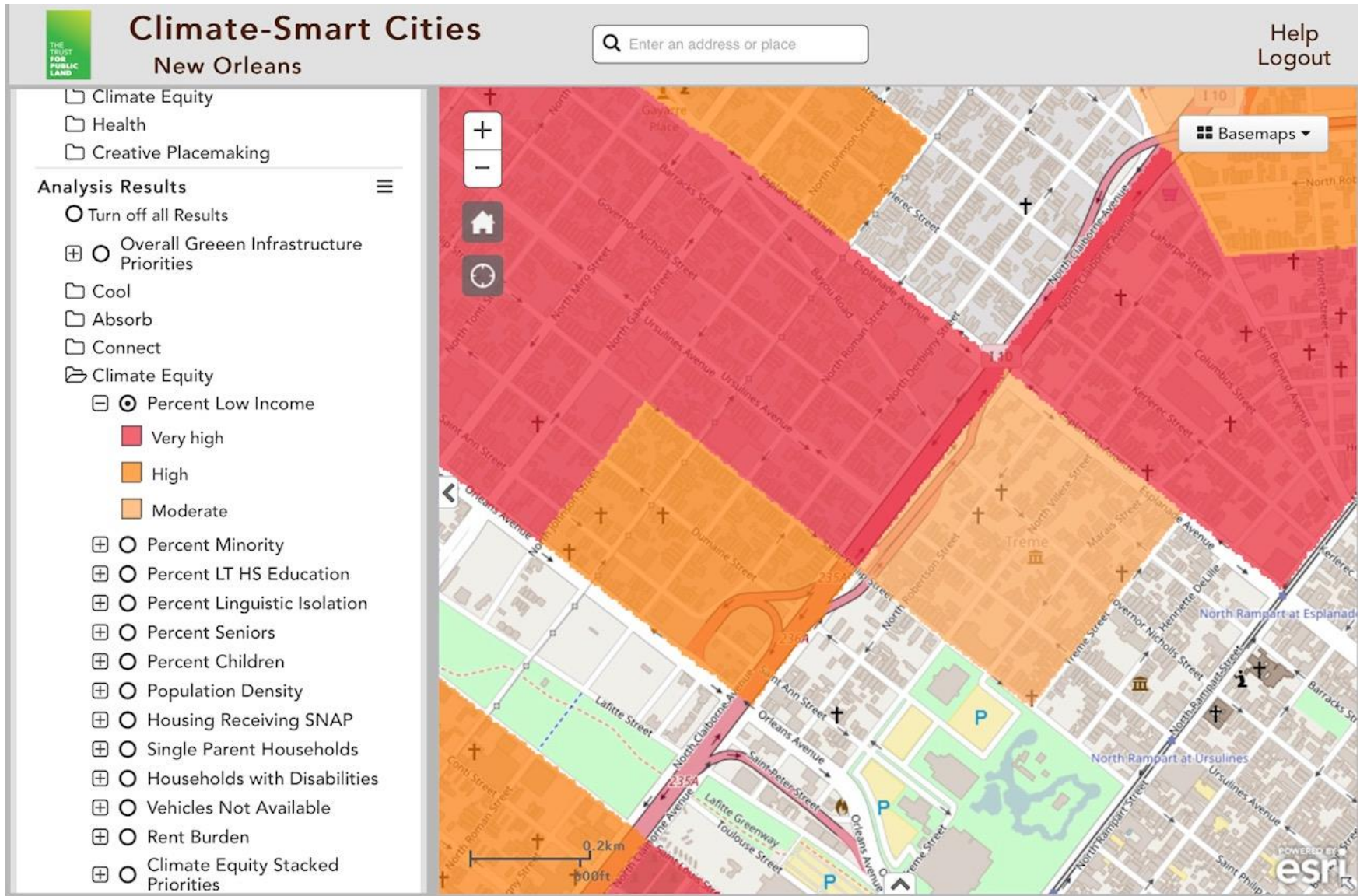
# CID Study Area: Orleans to St. Bernard



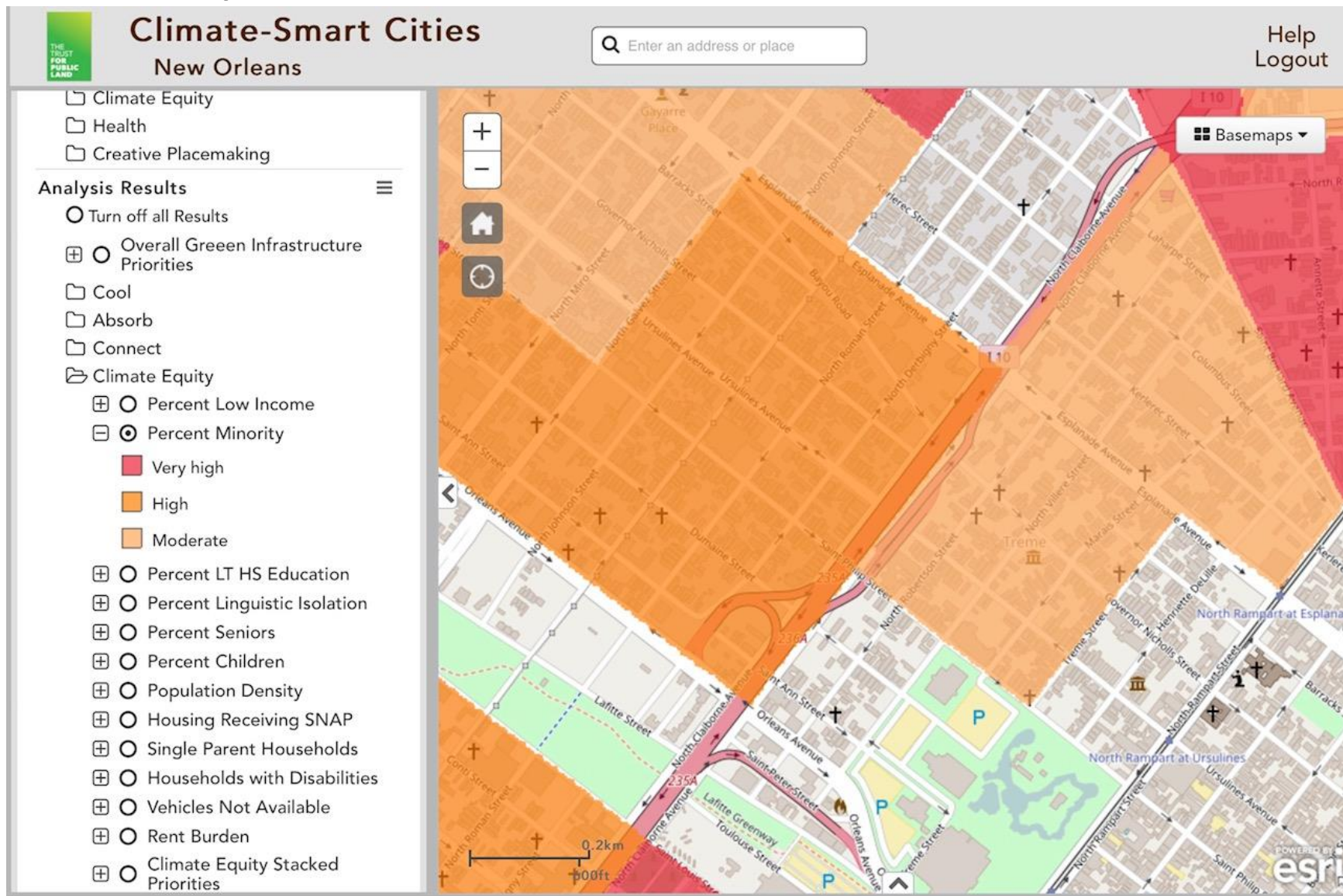
# VULNERABLE POPULATIONS



# Low Income

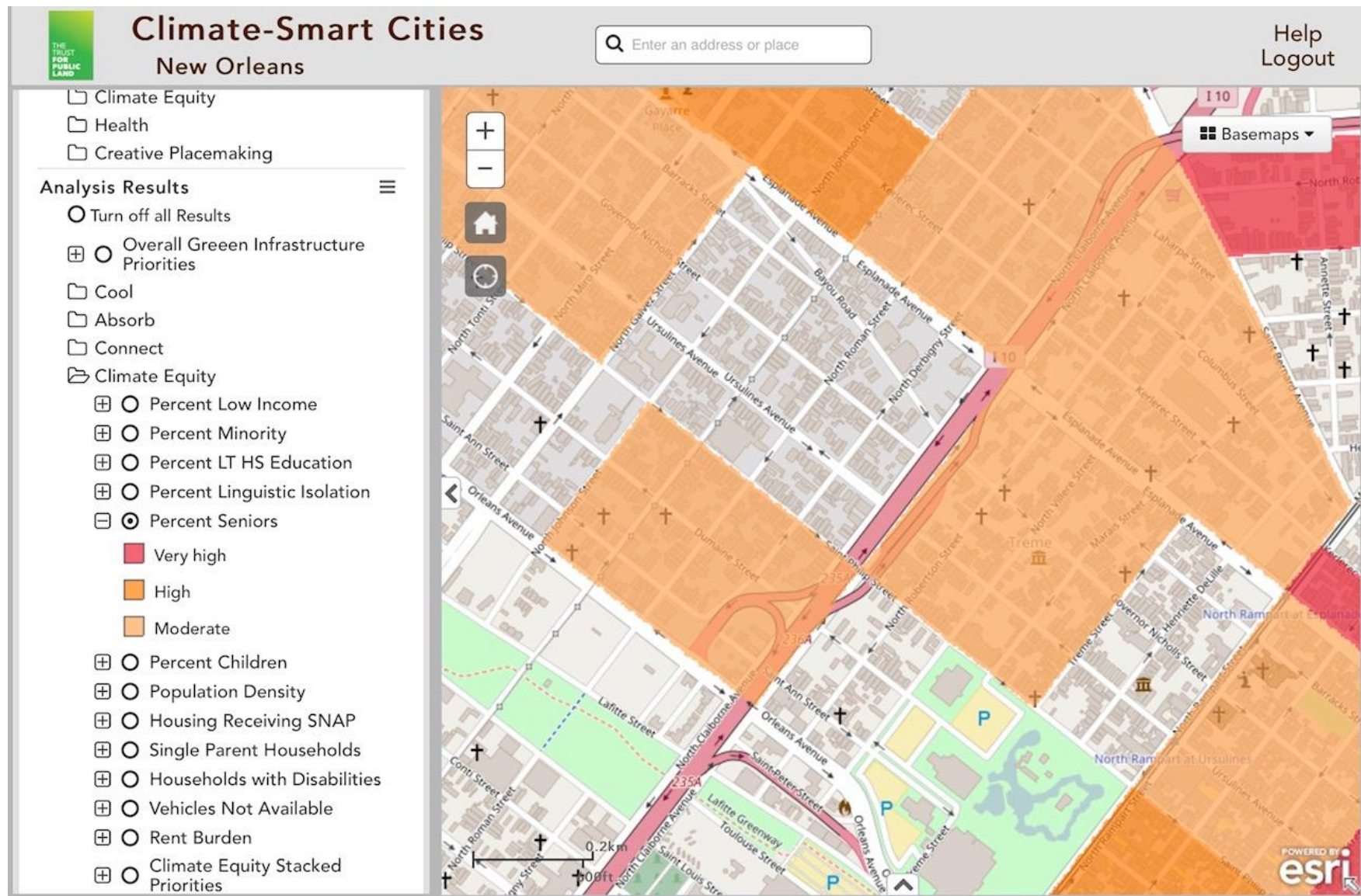


# Minority



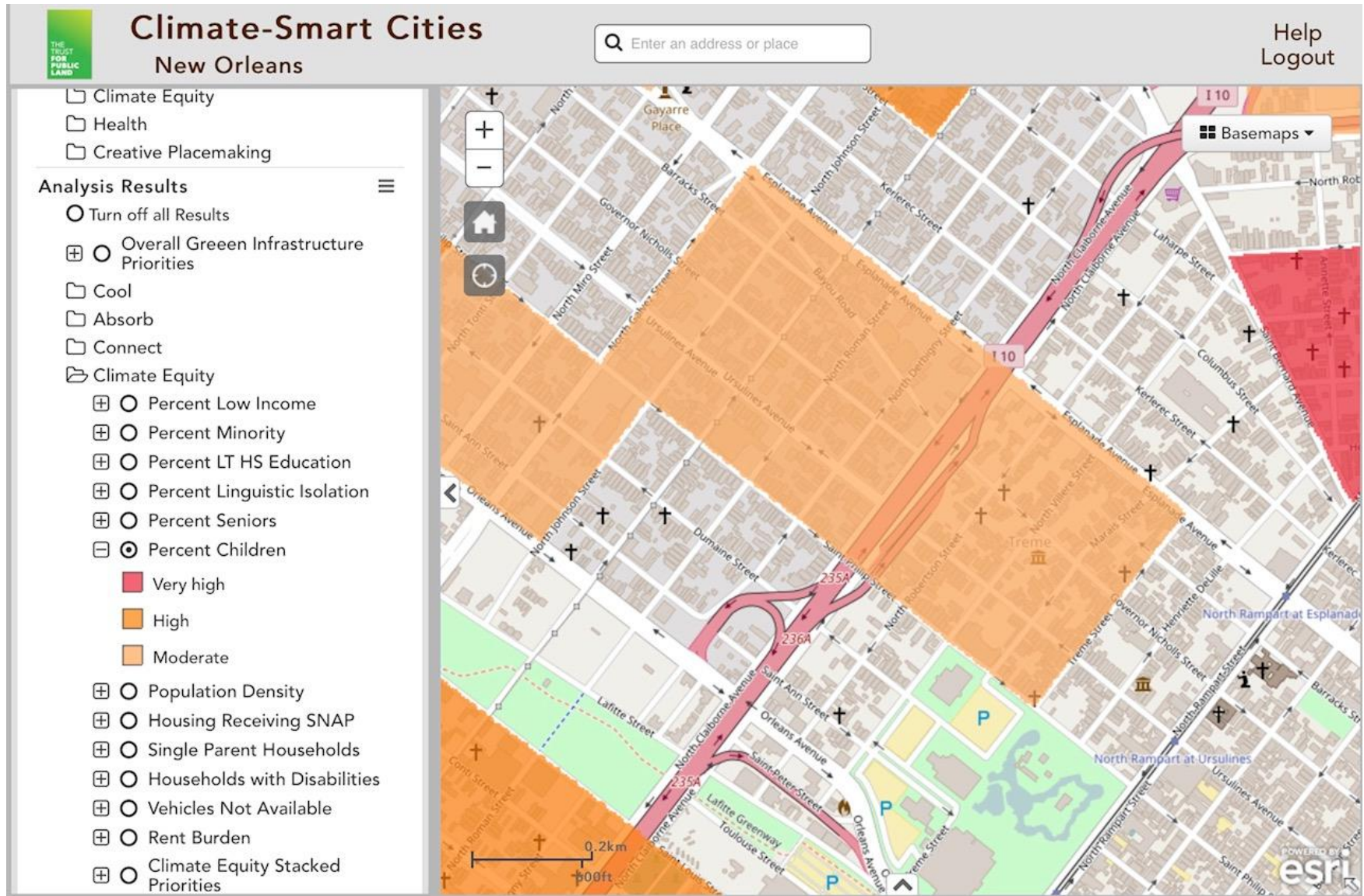


# Senior Citizens

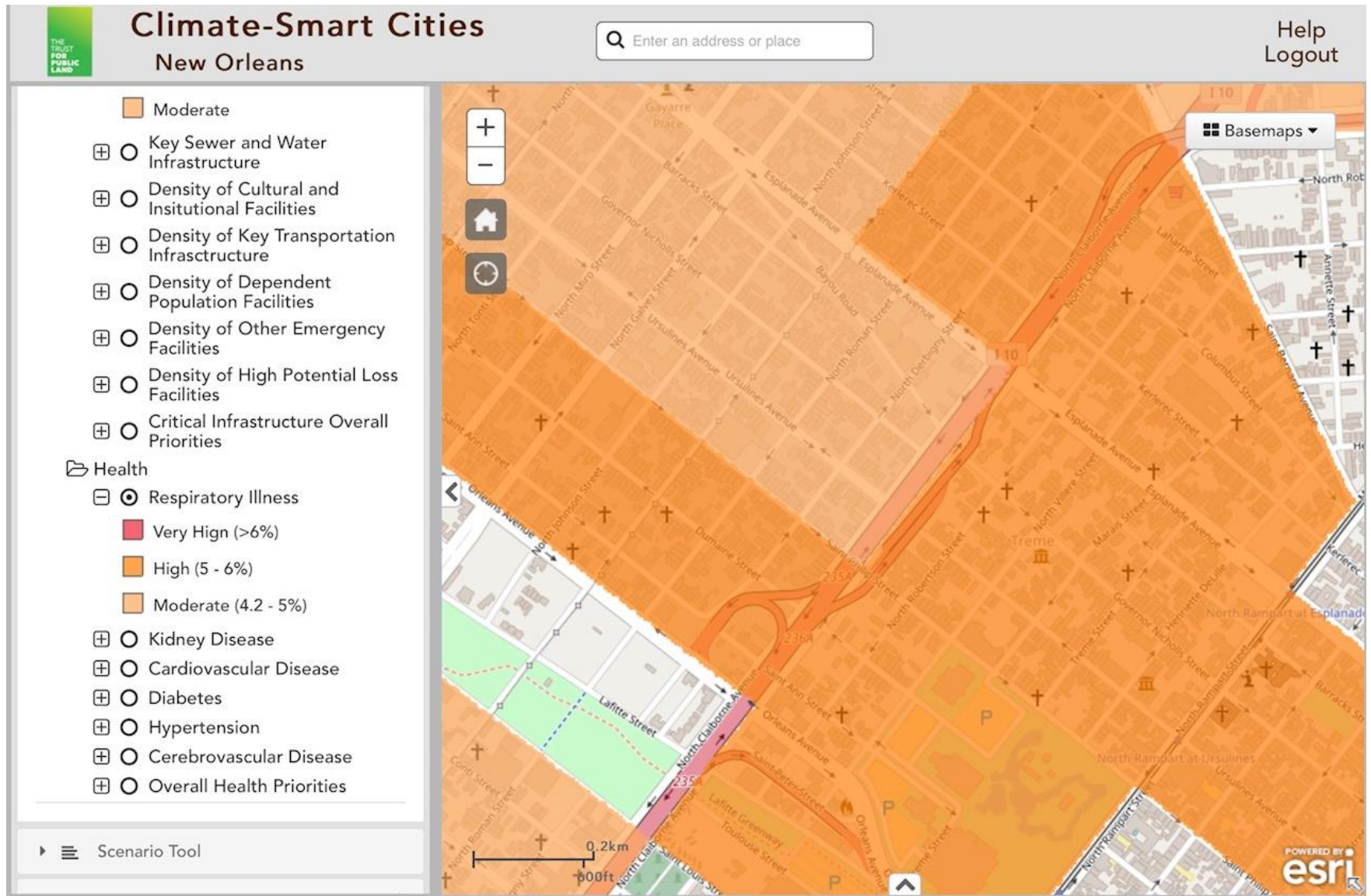




# Children

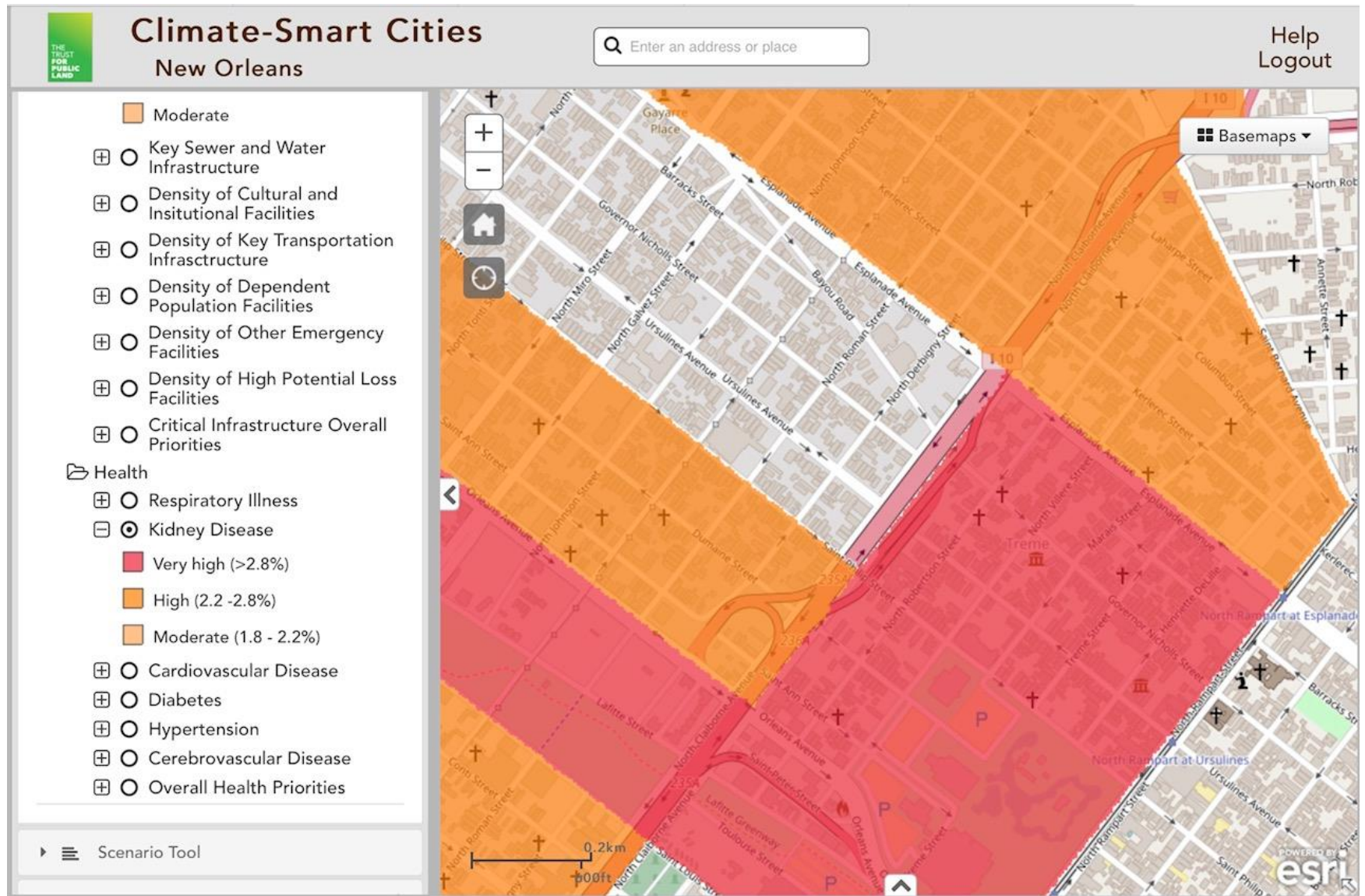


# Respiratory Illness



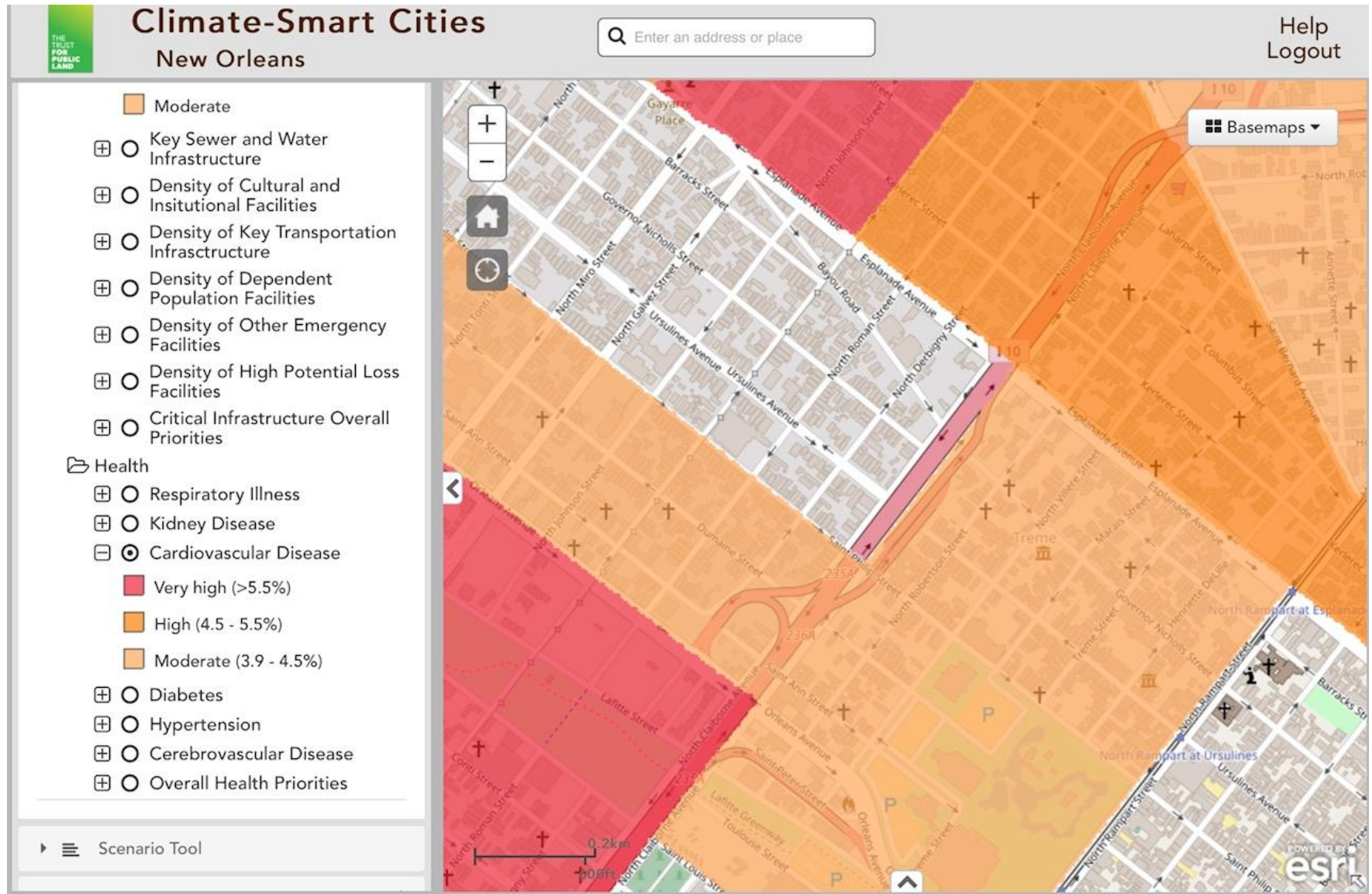


# Kidney Disease

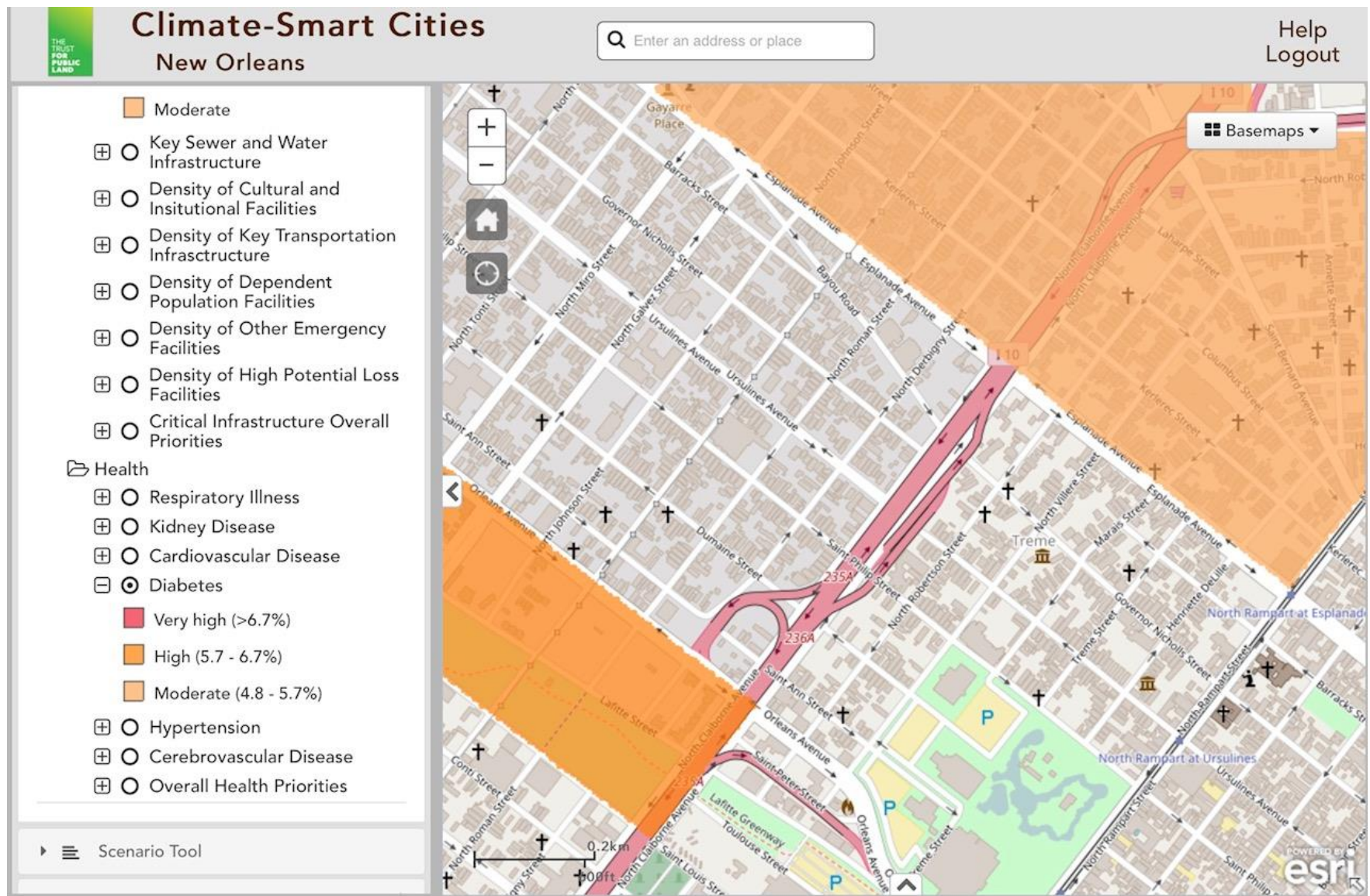




# Cardiovascular Disease

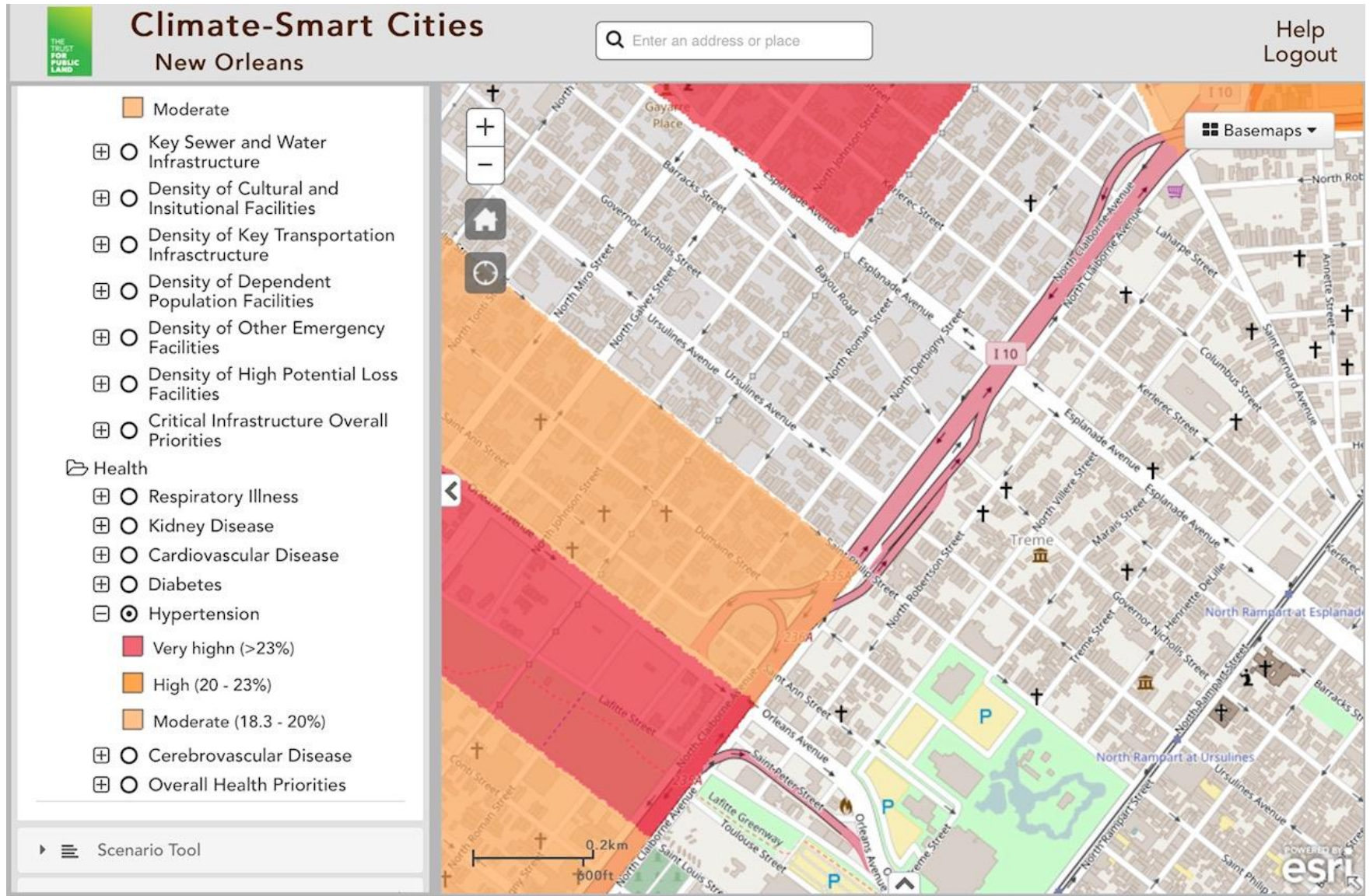


# Diabetes



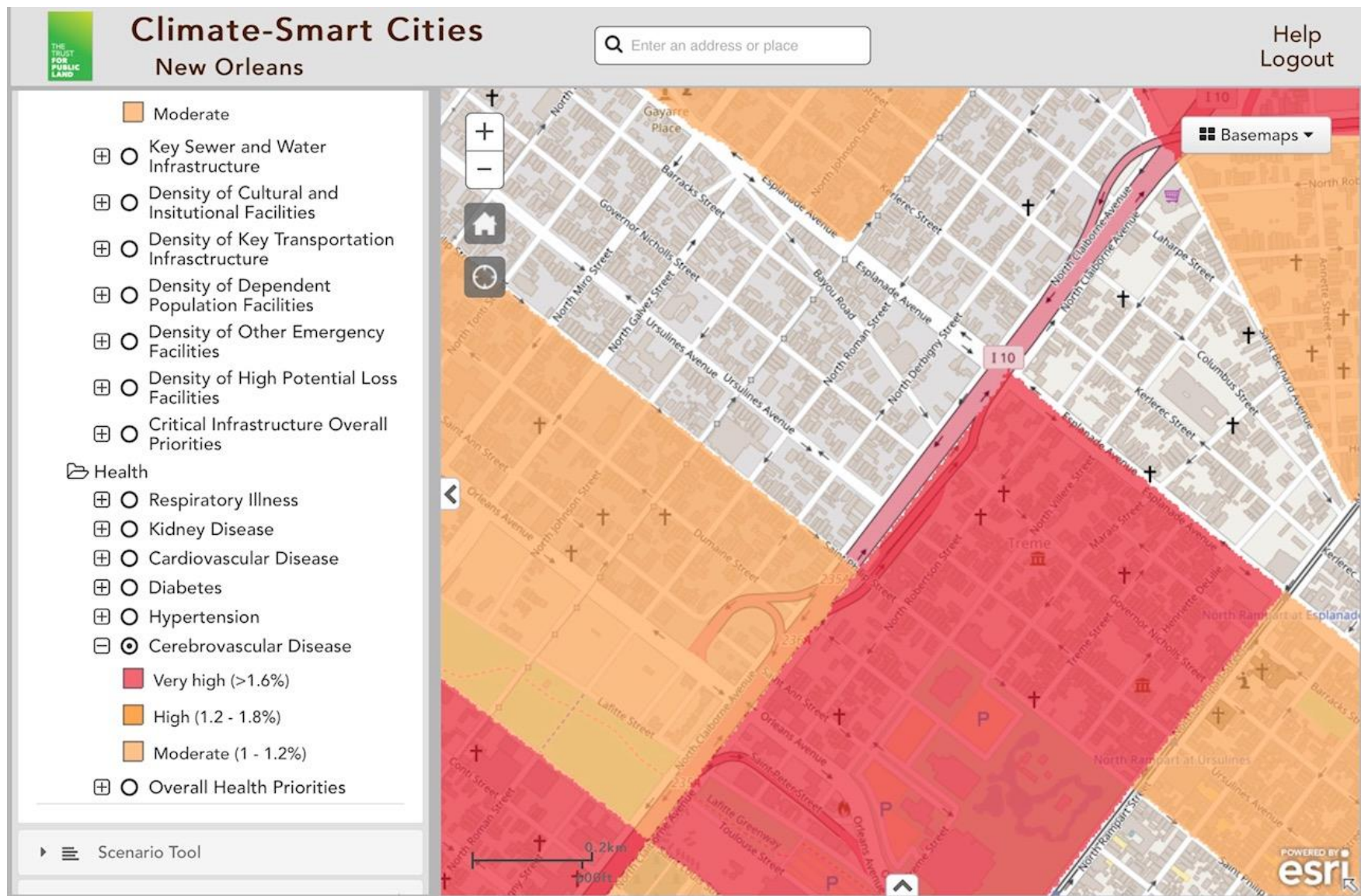


# Hypertension





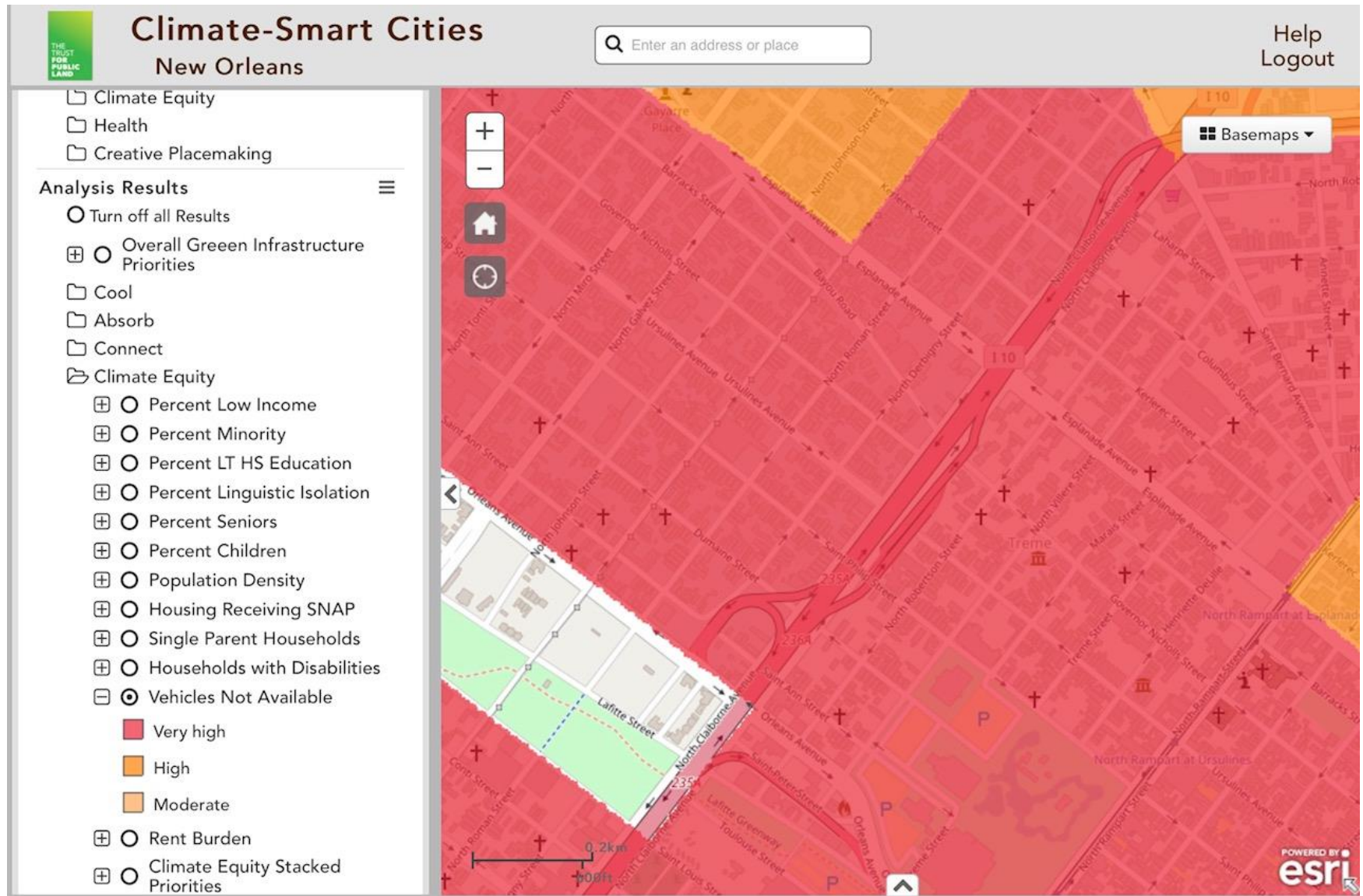
# Cerebrovascular Disease





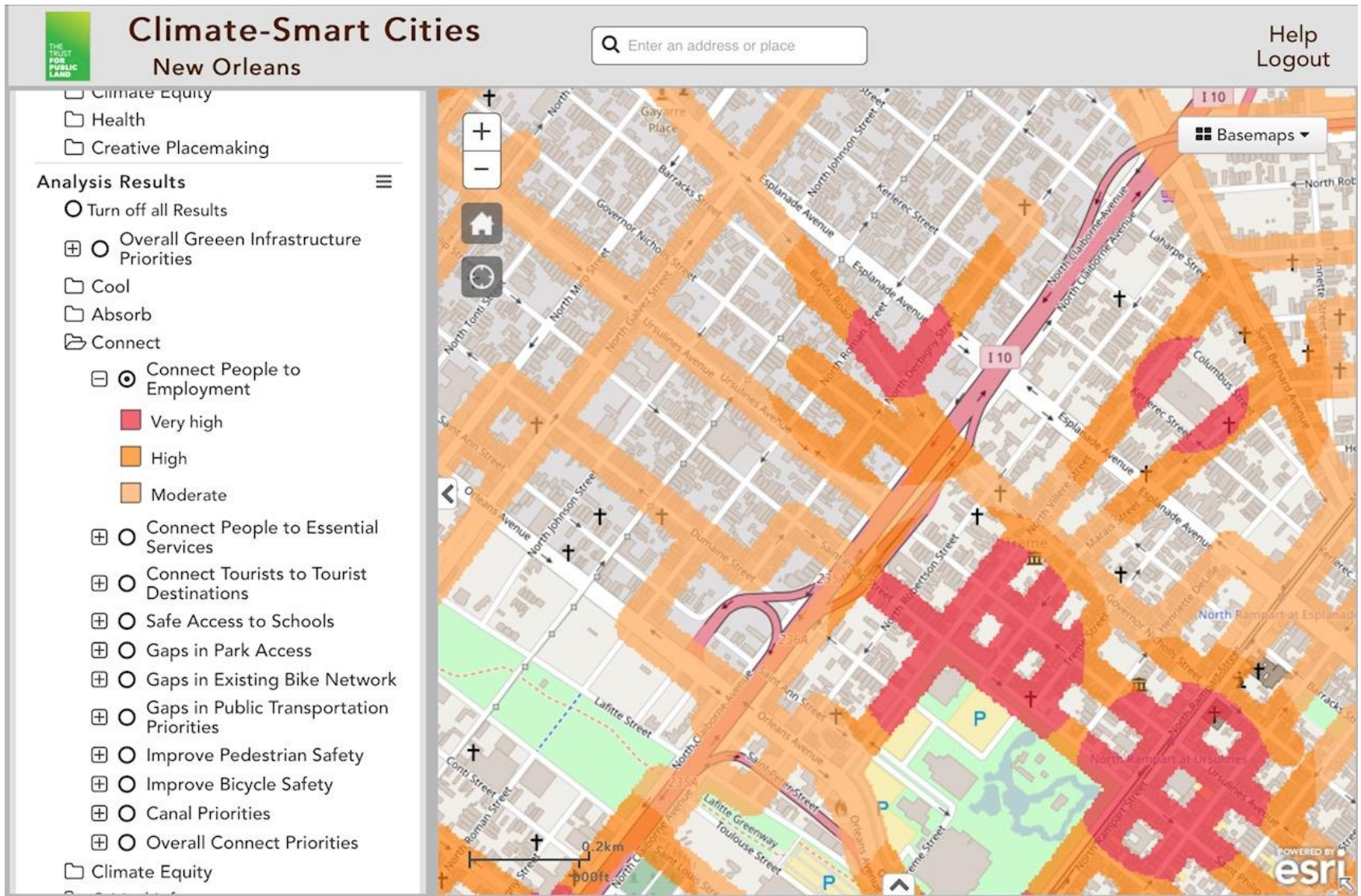
# TRANSIT & SAFETY

# No Vehicle



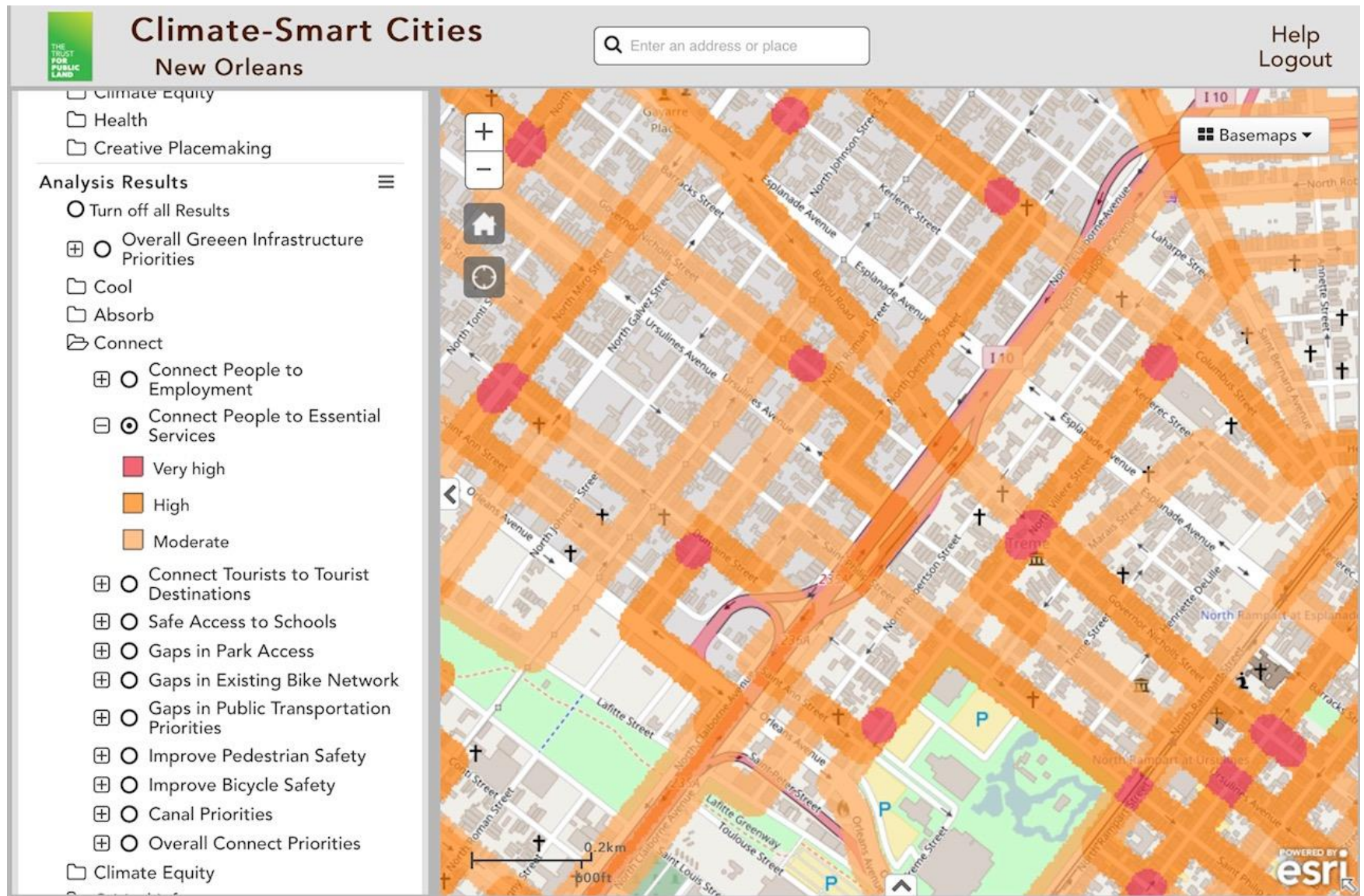


# Routes to Employment



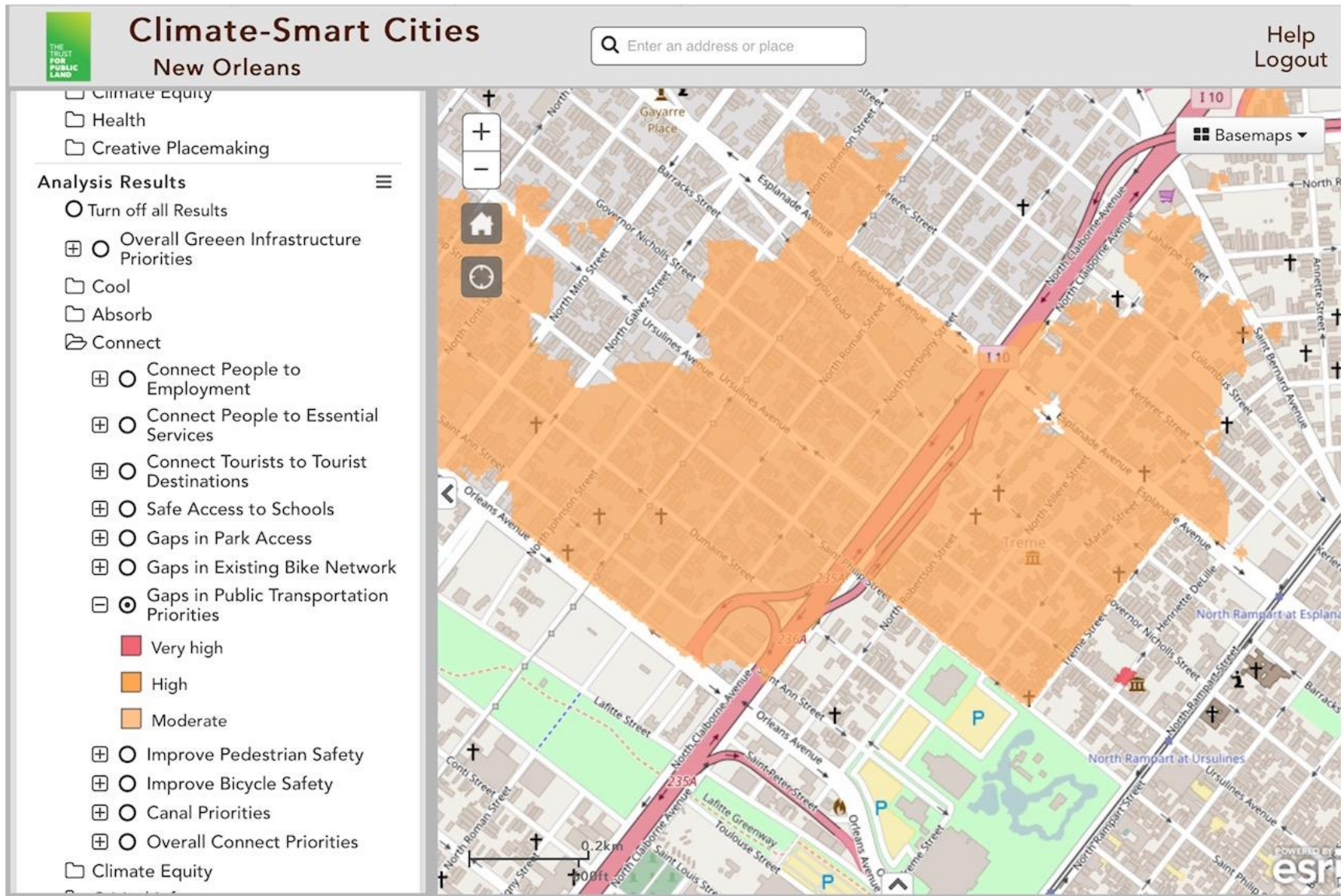


# Routes to Services



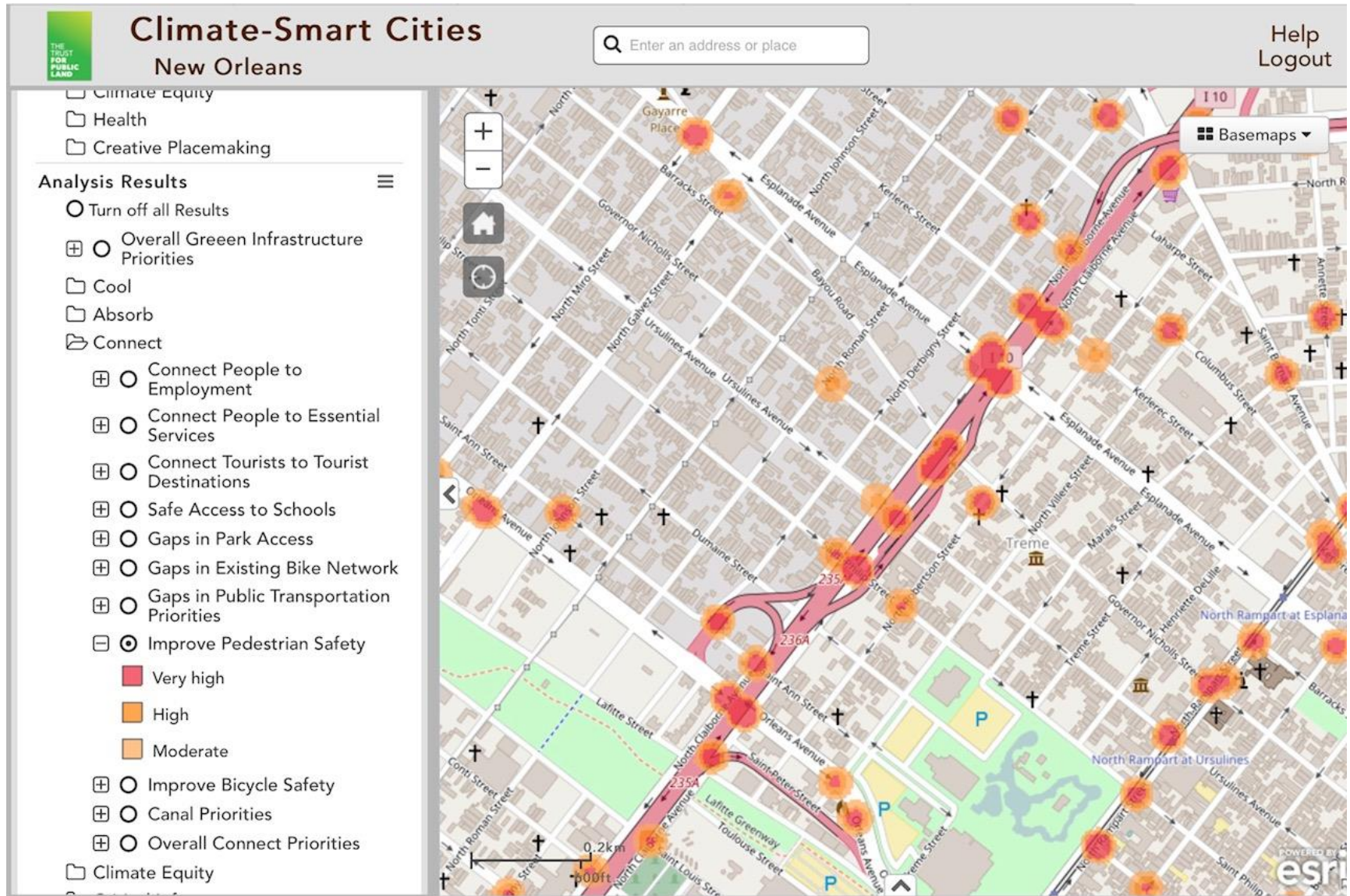


# Gaps in Public Transportation



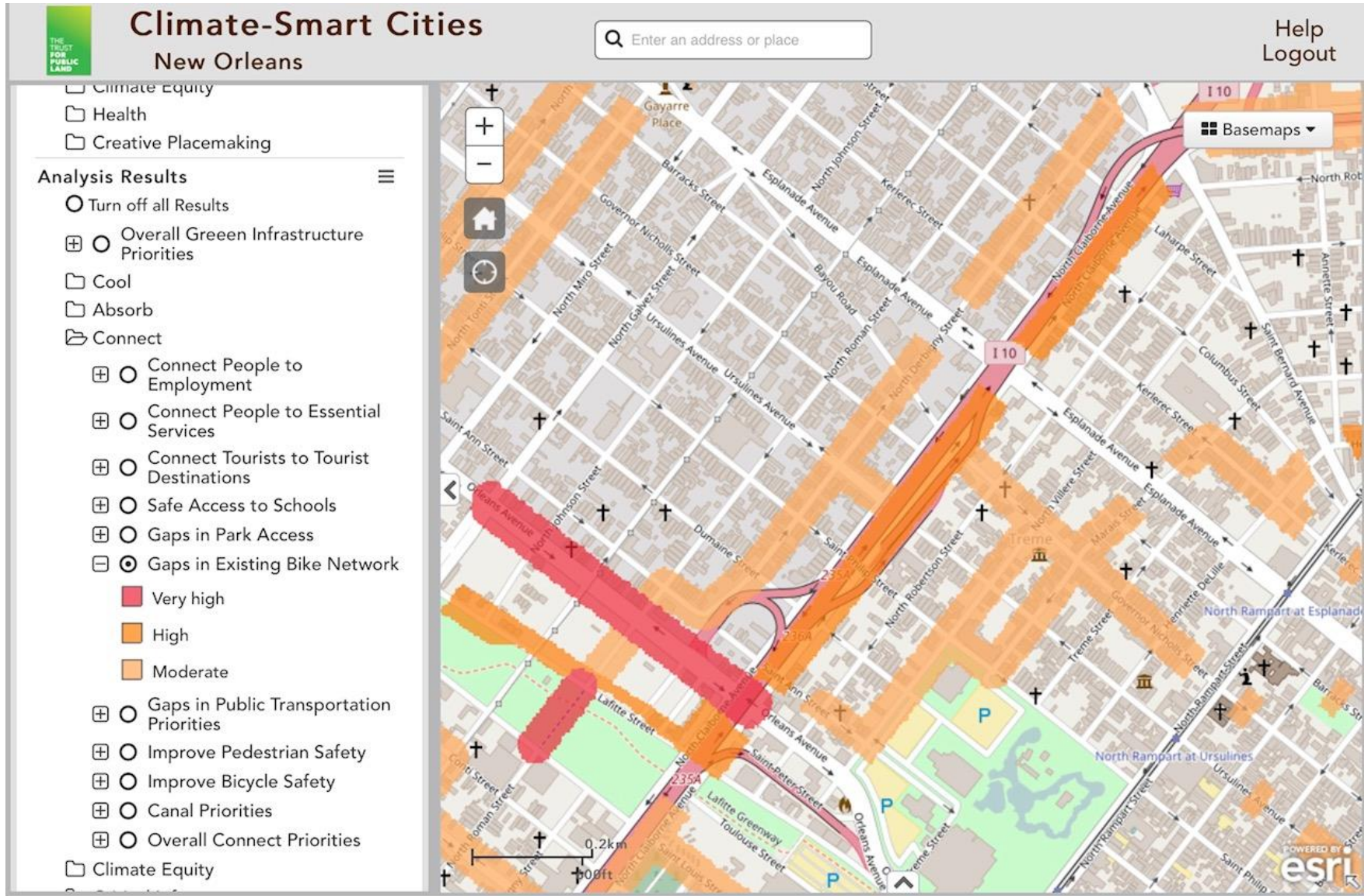


# Improve Pedestrian Safety



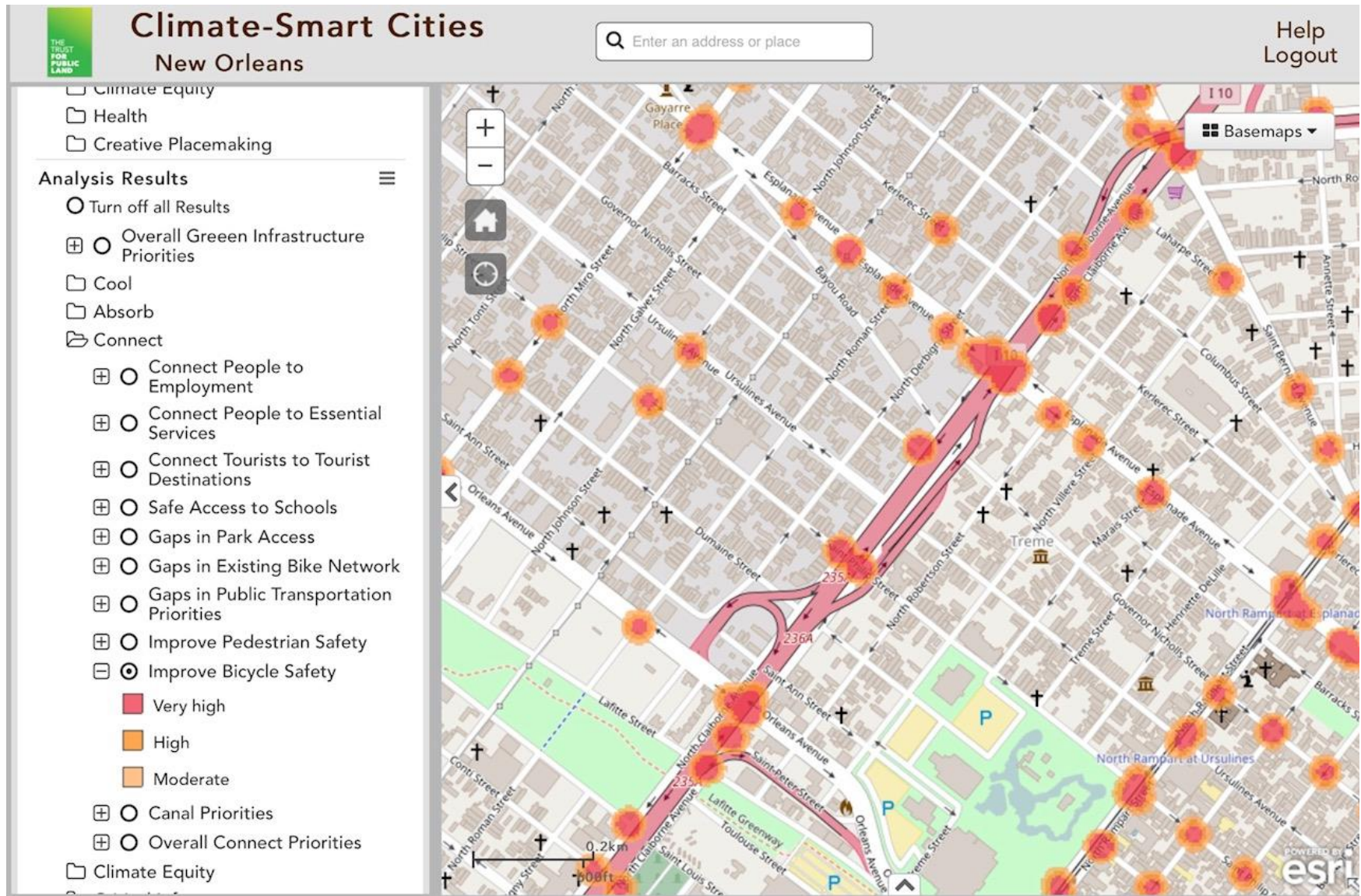


# Gaps in Bike Network



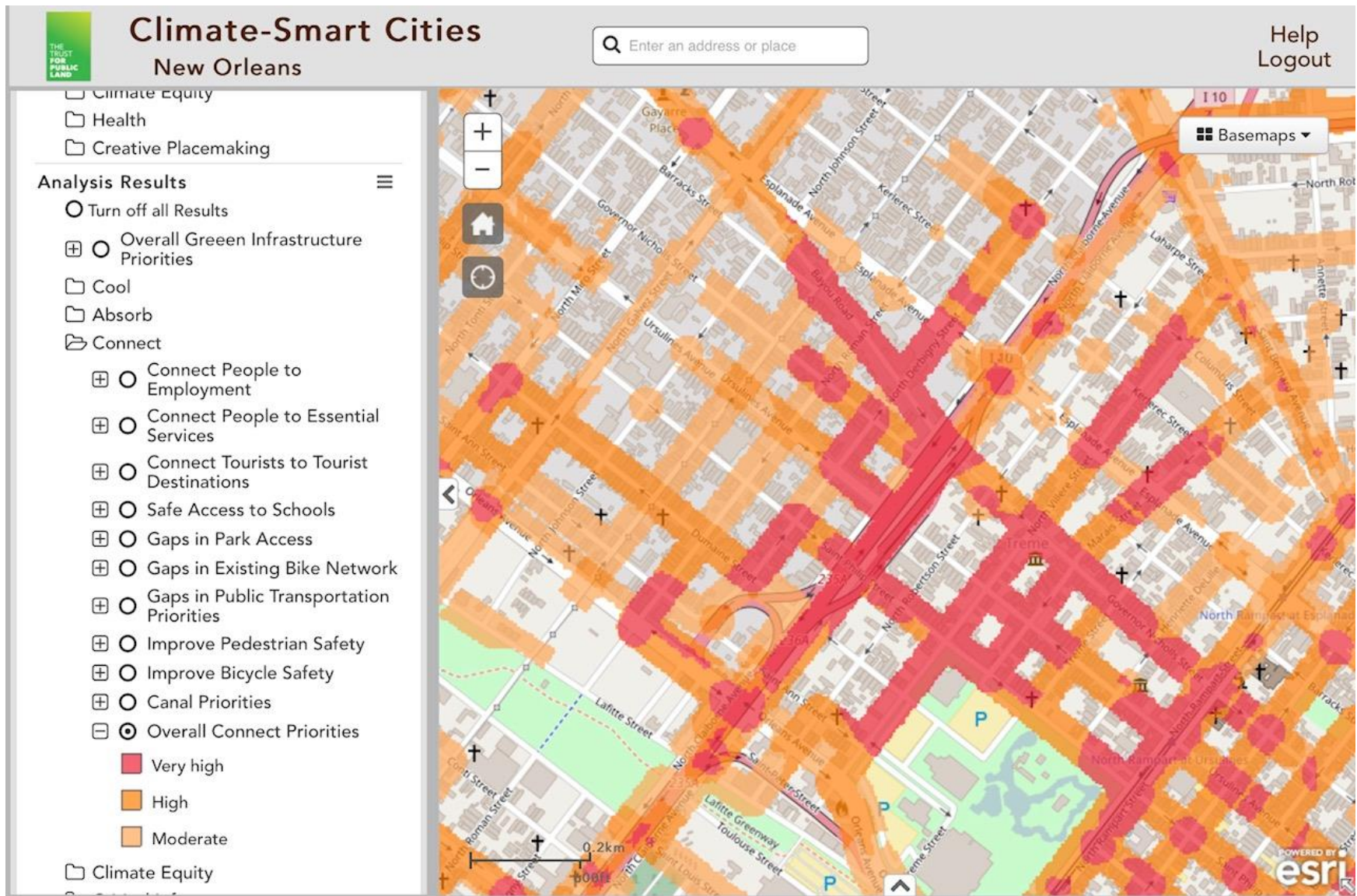


# Improve Bike Safety





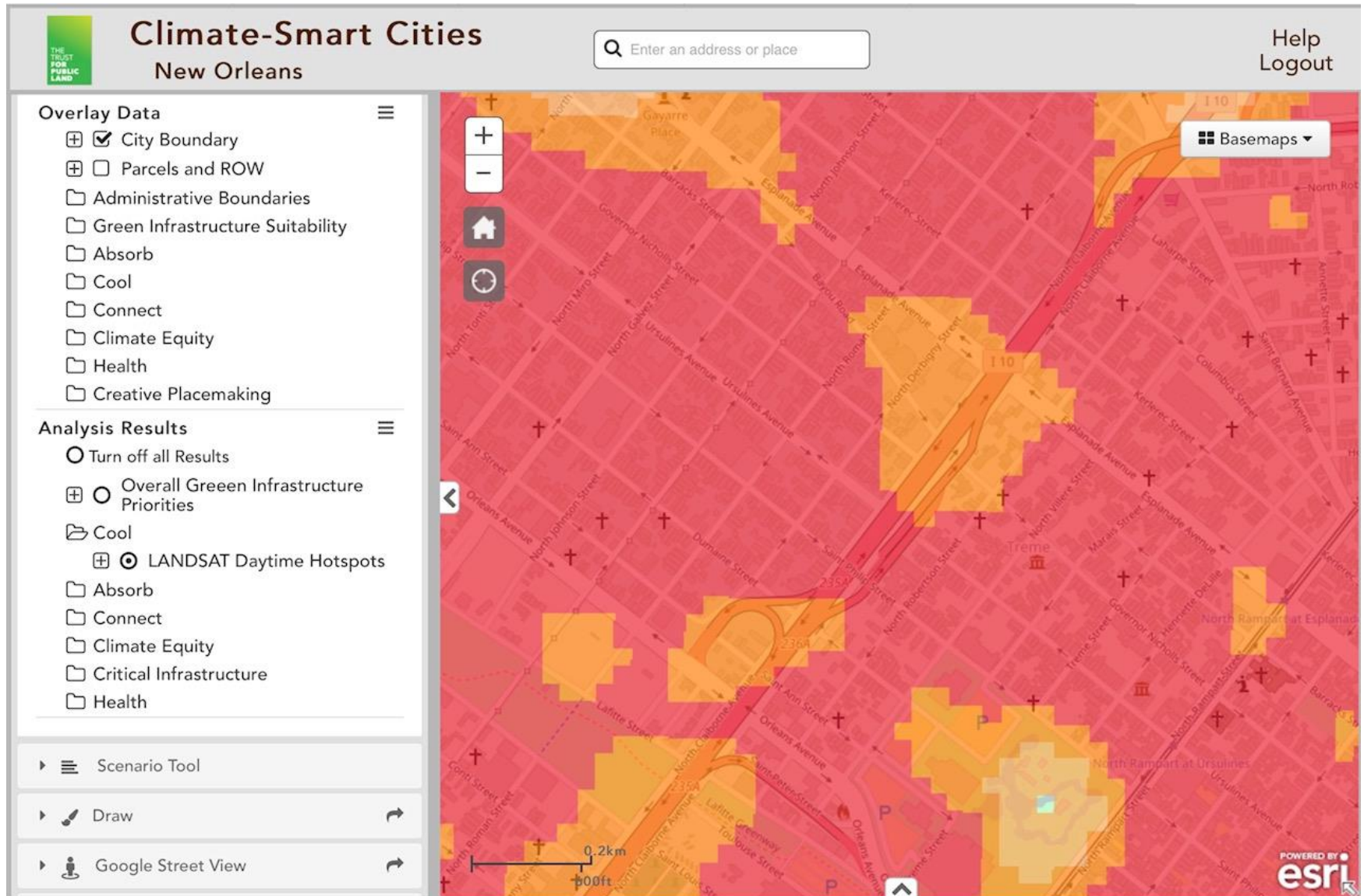
# Connection Priorities



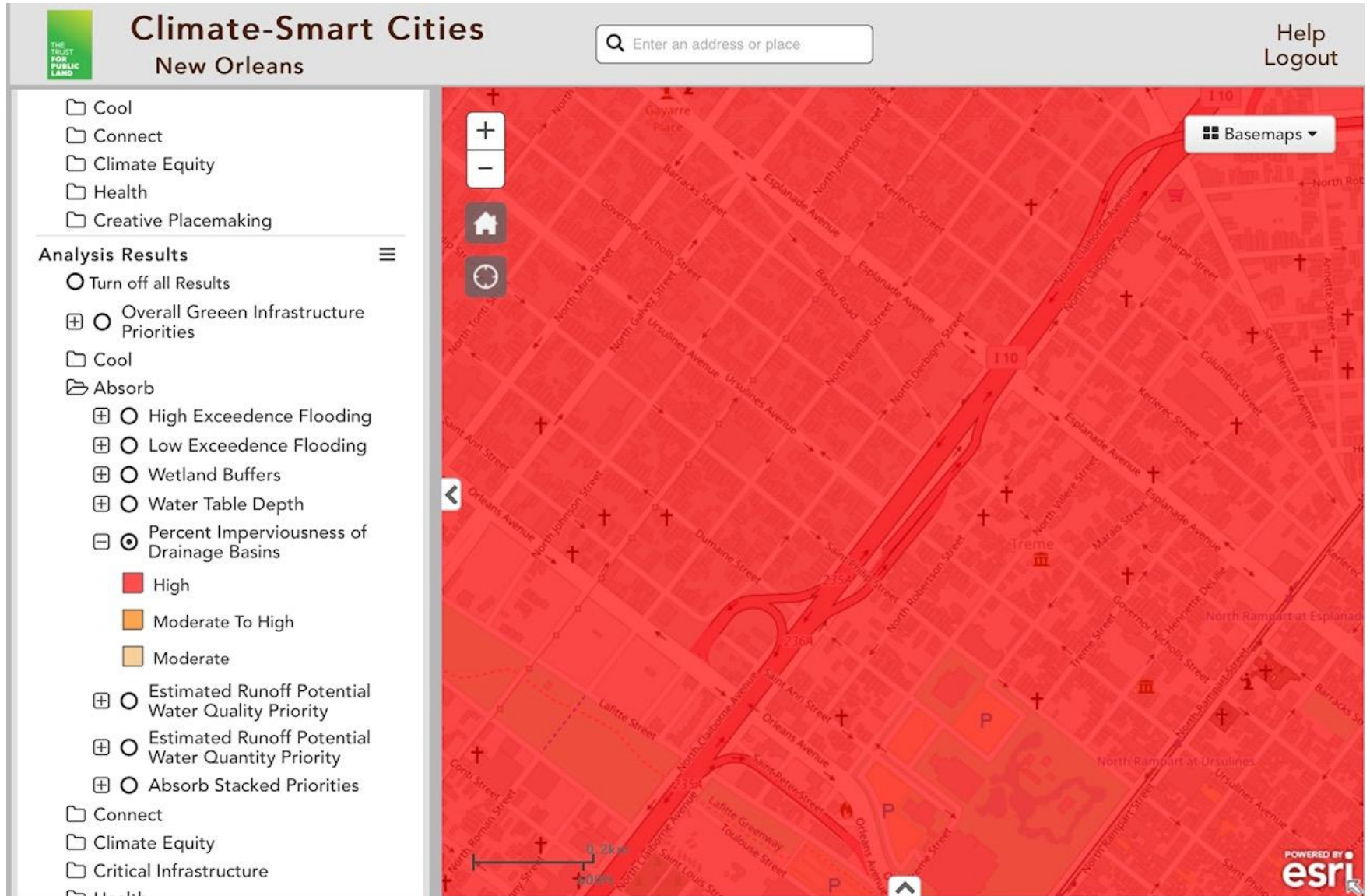
# HEAT & ABSORPTION



# Hotspots

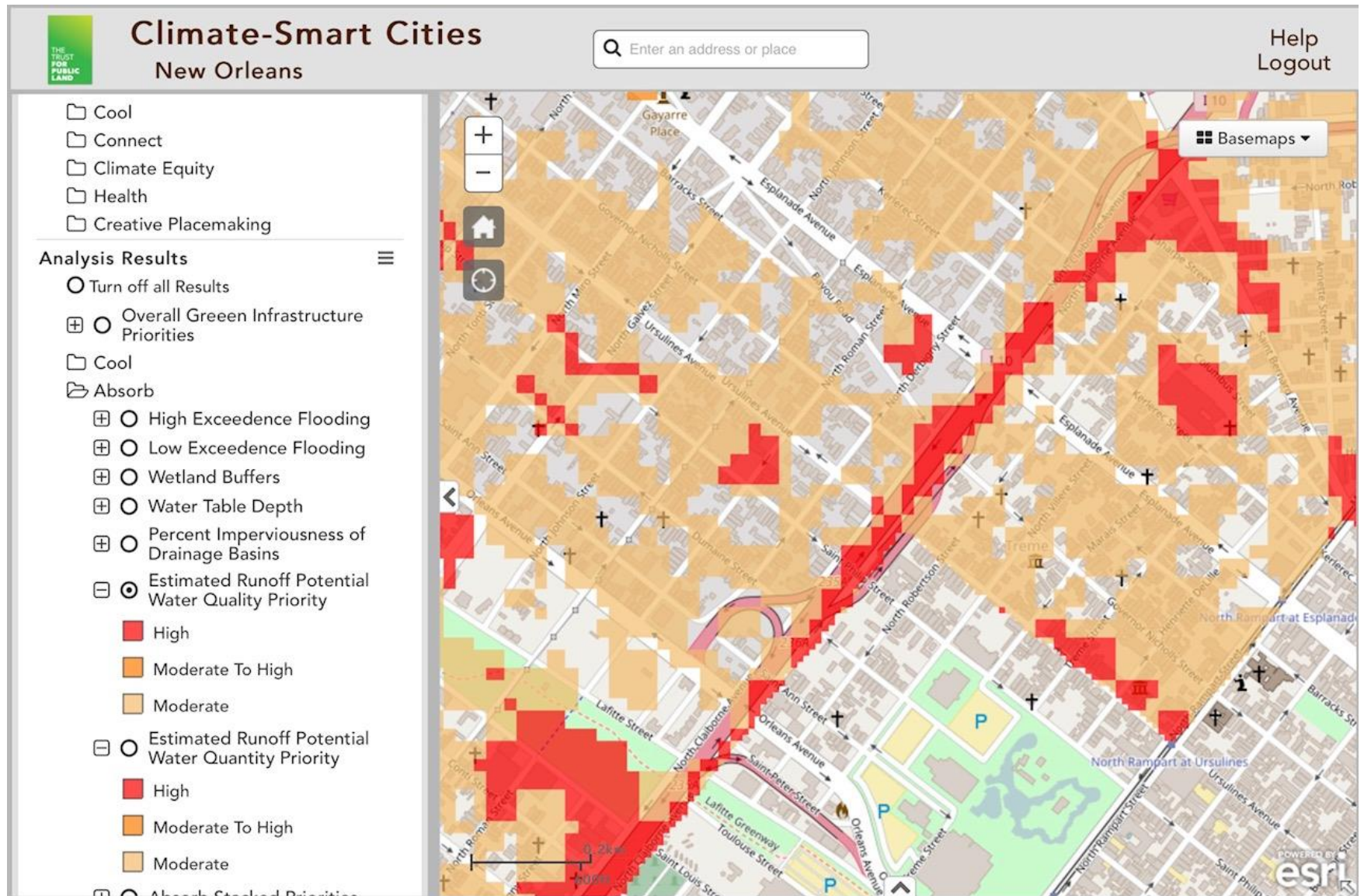


# Imperviousness

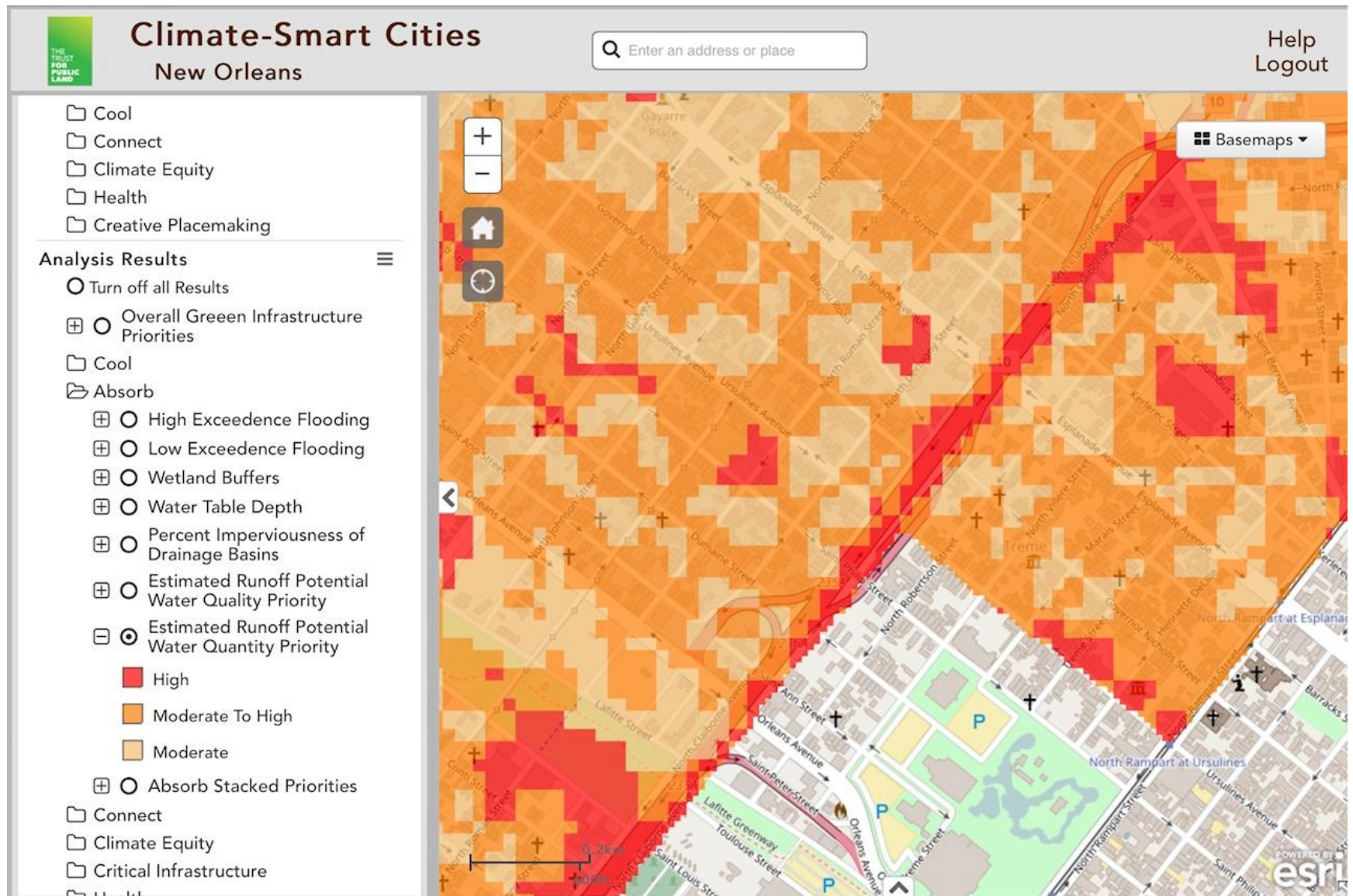




# Runoff from ½" Rain

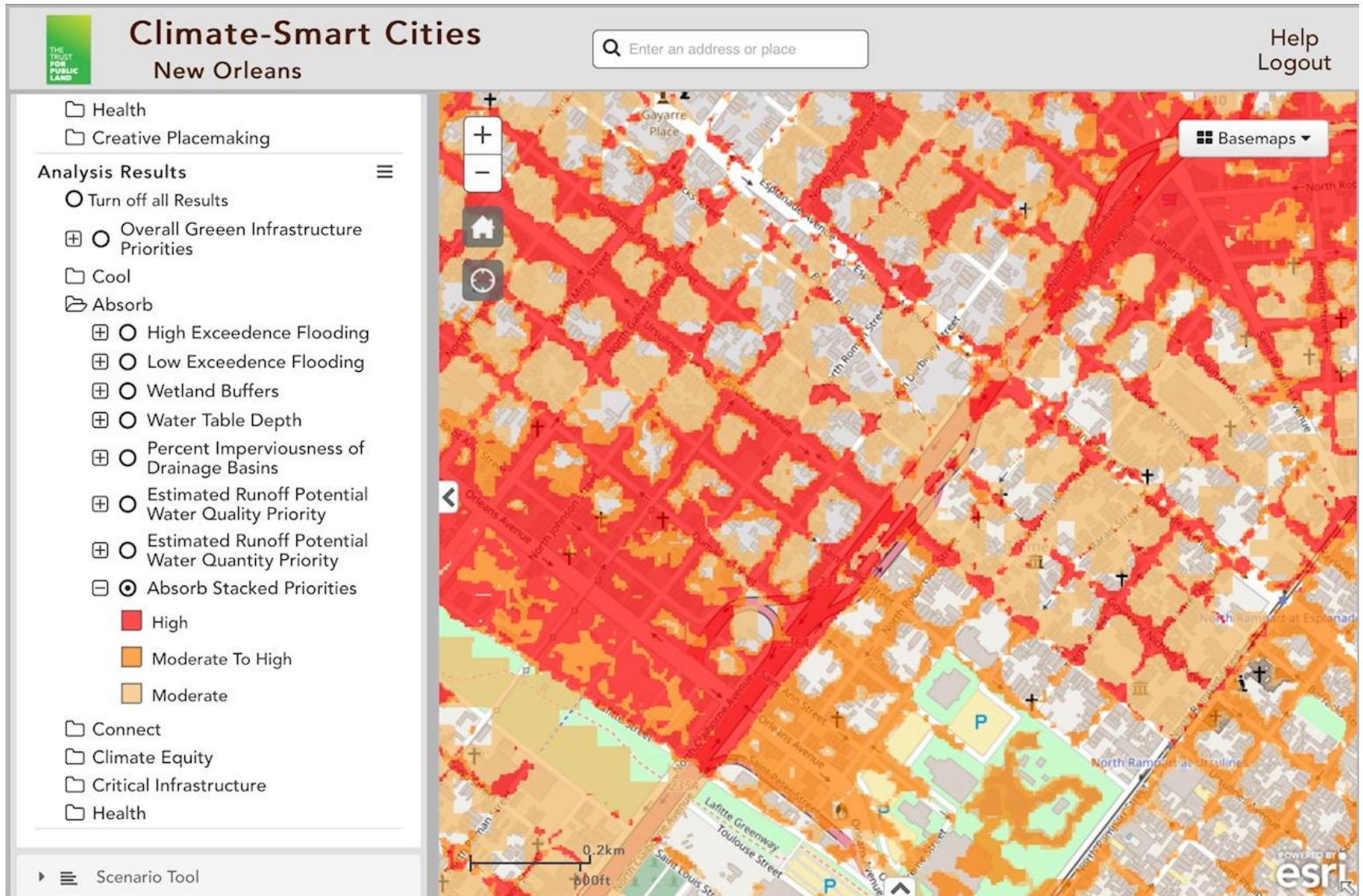


- considers land use and soil characteristics





# Stacked Priorities for Absorption





# Need for Green Infrastructure

